








All-in-One Display Solution

Overall intelligent display solution
with fast GUIs makes professional
and creativity in your industry

Rm N306, Feicuiwan Industrial Park,
No. 16 Zhanye Rd., SIP Suzhou 215121, China.
Tel. (+86) 512-65883844
www.proculustech.com

Expert in GUIs with Total Solutions in Intelligent TFT LCMs



-  Color and Backlight
16Bit,LED
-  Size
2.8" to 18.5"
-  Memory and Platform
128MB to 2GB/ Visual
-  Touch Screen
P-CAP, RTP
-  Voltage
3.6V to 42V
-  Programming
USB or SD Card
-  Communication
UART Serial

DISPLAY
UART

WHO ARE WE?

Proculus Technologies is the innovative company in the industry of embedded devices, focusing in All-in-one TFT LCDs including UARTs and Android Solutions.

Its intelligent displays, integrated LCD and touch panel as well as graphical interface, greatly reduce the development complexity and time requirements for products that requesting rich and beautiful GUIs, by moving the graphical processing hard work out from the microcontrollers to the LCM itself.

Software UnicView®, the tool of development designed by Proculus, transforms your artist's imagination into reality quickly and at low costs by UARTs with your machine, from early development period to final production

There is much less to learn and that much more to accomplish. With the smart display and touch screen interface, you will win customers with technology and innovation.

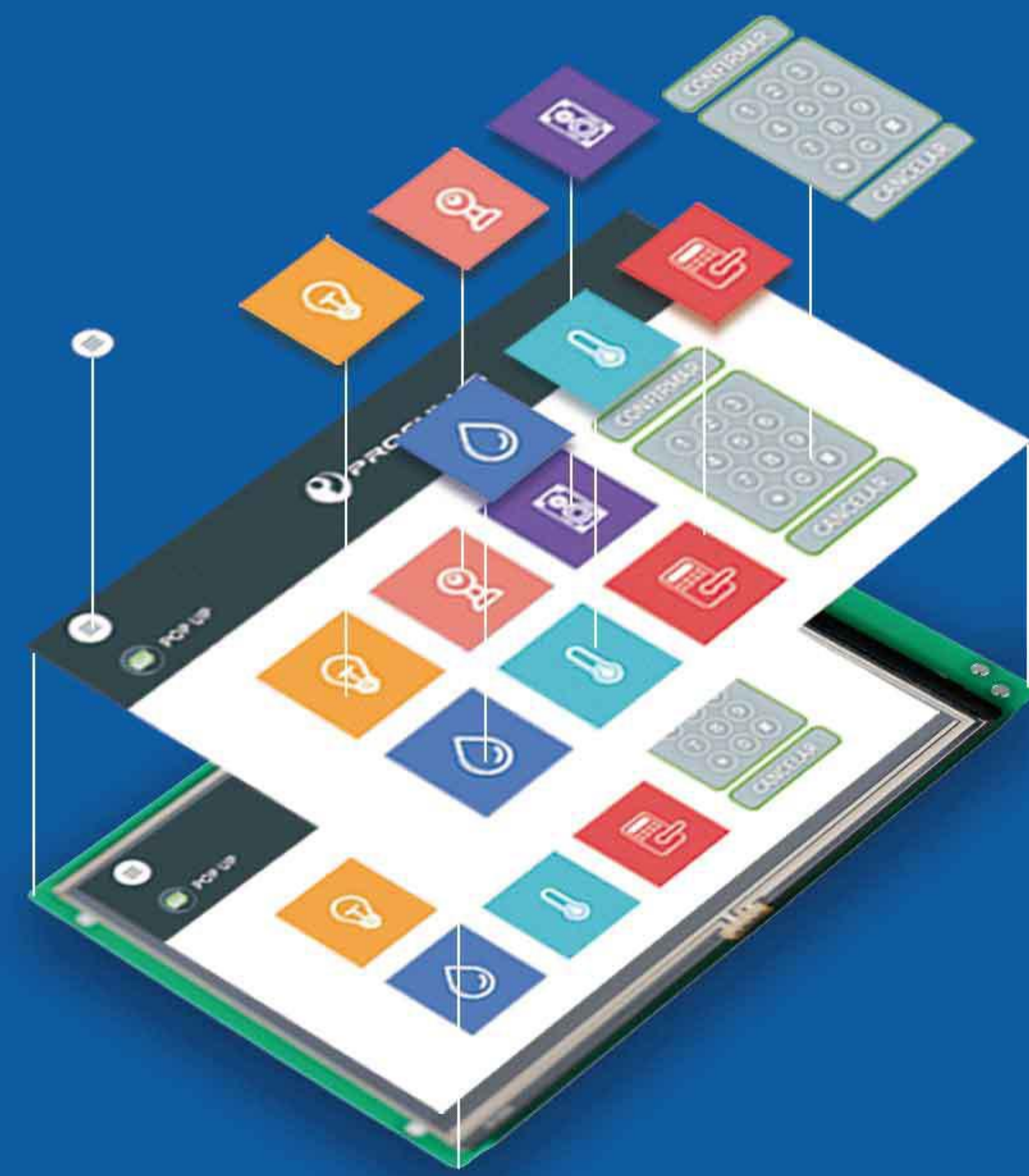


WHAT DO WE OFFER?

Proculus Technologies provides a completed solution on Intelligent display, including intuitive visual interface software, high-quality display module, accessories as well as dedicated technical support.

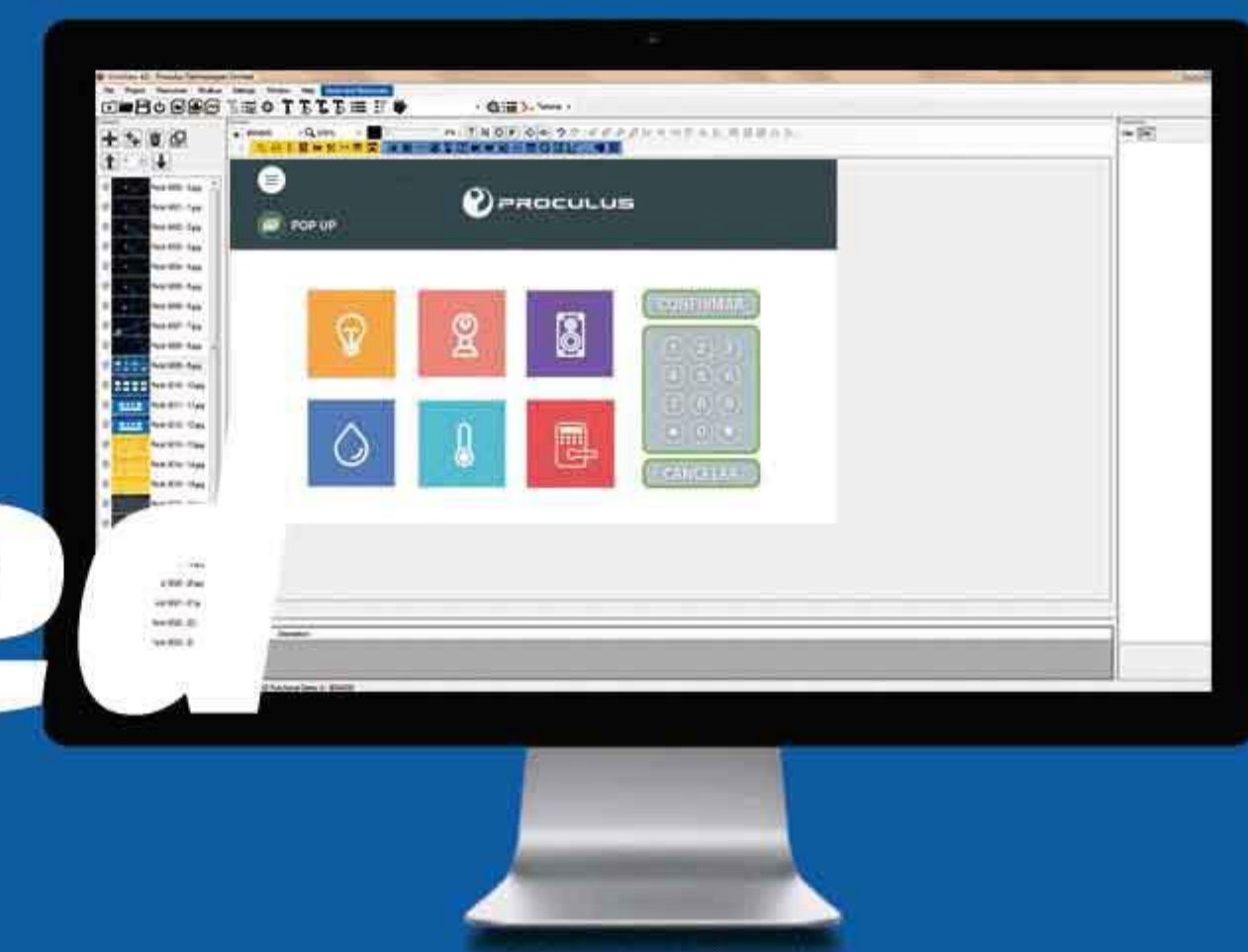
It is likely to be applied to the industry of medical machine, vending machine, smart home, coffee machine etc.

Overall Intelligent display solution with fast GUIs makes professional and creativity in your industry.



Touchscreen and Graphical Design Configured to All-in-One module

No coding skills required

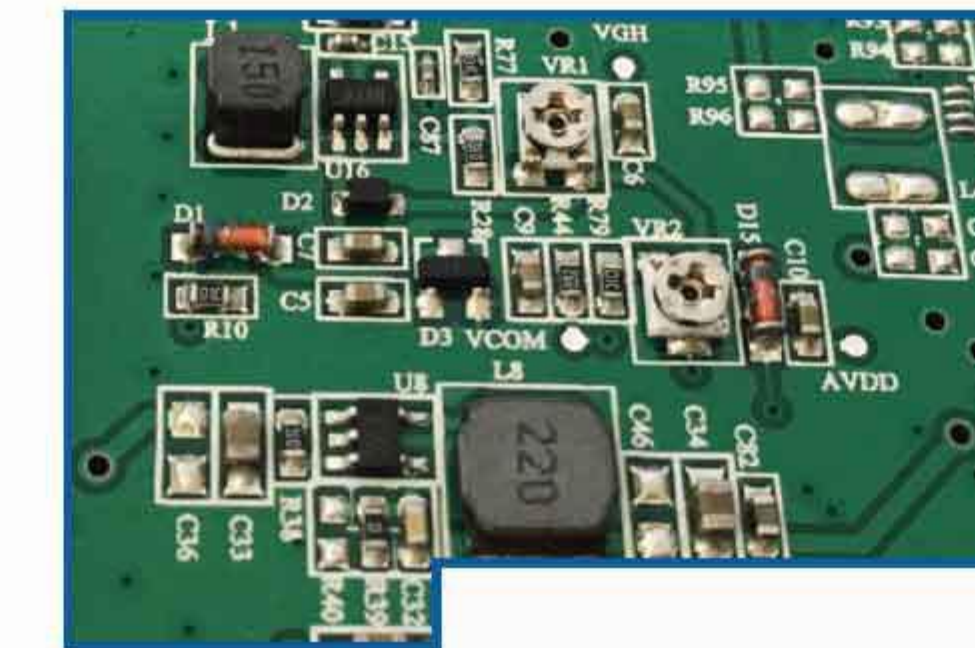


Interface Project build up on PC by Proculus GUI Designer UnicView AD

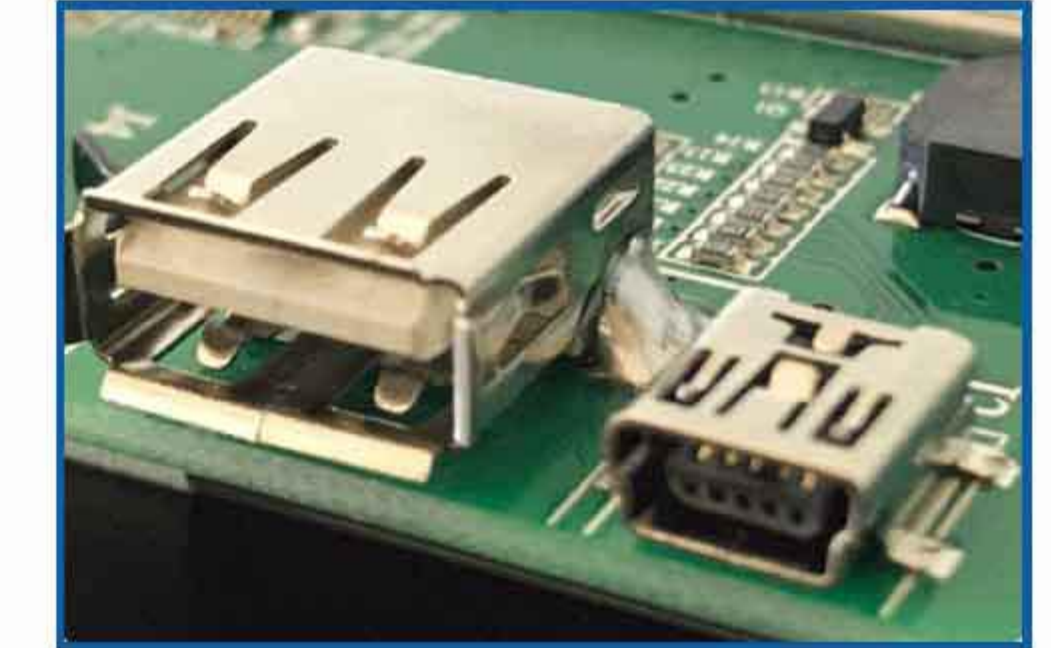


MCU
Easy integration with MCUs

USB
Complied File Exported to module via SD Card or USB Flash Drive



Good quality Components ESD Protection/Shock Test Applied Working Temperature -20°C/70°C



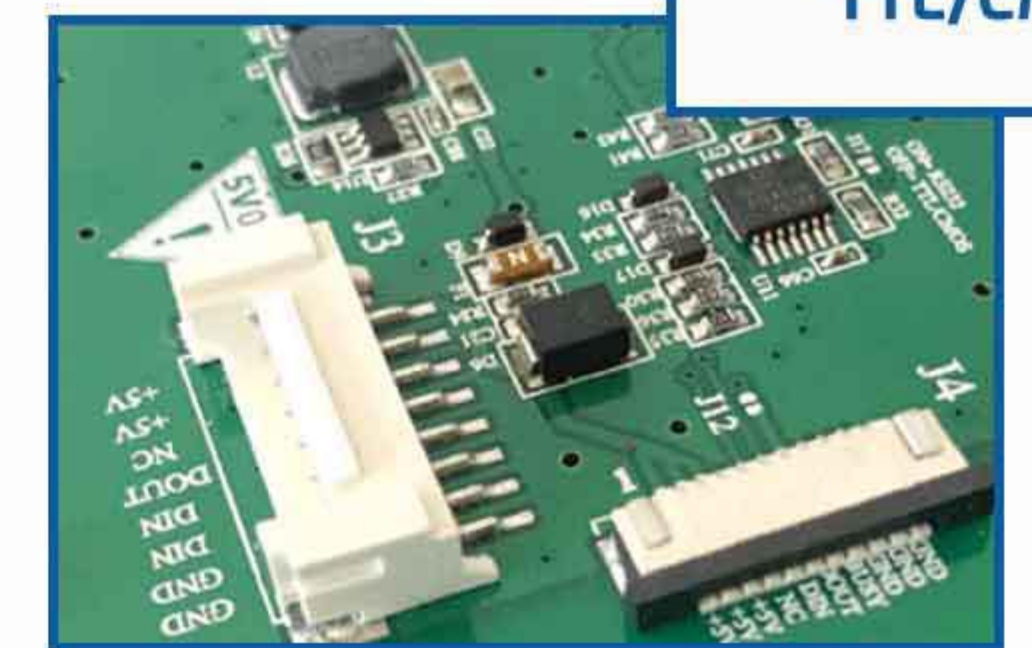
Interface Configuration via SD Card USB or USB



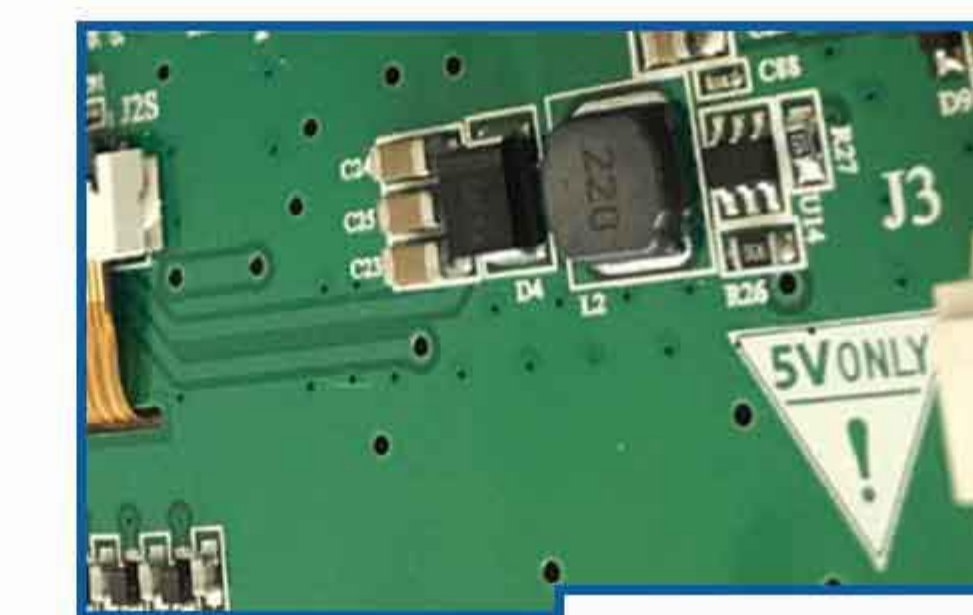
UART Serial Protocol (Only 5 Commands Required)



RS232 RS485 TTL/CMOS



Built-in RTC



Voltage Range 3.6V-42V



2.8" Sample Starter Kits



1 year free Warranty



Clean Documentation



Technical Support

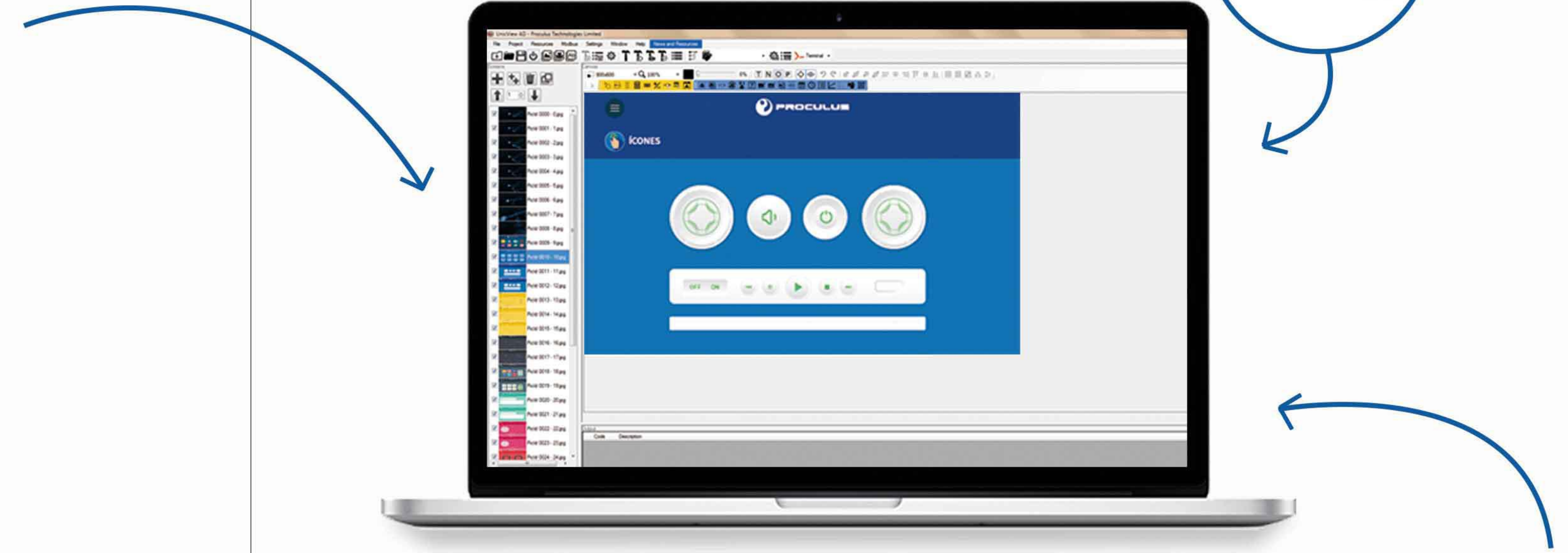


Online Serial Key for UnicView AD



Lead Time 3 weeks

UnicView AD is a GUI Designer used to create the configured on project or AD LCMs. It provides an intuitive and easy-to-use environment to create Human-Machine Graphical Interfaces very quickly.



Visual "Drag & Drop" Editor

Interface Objects (or Elements) are placed simply by dragging and dropping over the Screen canvas.

All Interface Objects' Properties (e.g. Font Color, Position, etc.) for the selected Objects can be quickly edited on the "Properties" panel.

Rearrange, Resize, Reorder - All the common layout tools are available, for an intuitive and smooth work. Undo and Redo functions for all manipulations on Interface Objects.



Library Editors

Create and modify Image, Icon and Font libraries very quickly. Any modifications on the libraries update the project structure automatically when it's compiled.

Just drag and drop images file to the Image and Icon library editors to add new resources to the project.



No coding skills required

Software Developers, Graphical Designers, Businessmen: anyone can use the software and collaborate to the project development process.

Project can be split across a team: a Graphical Designer Expert can create the Screen Backgrounds, while a Software Engineer decides what the Object Address mapping should be like.



Easy to learn

Extensive documentation, including:

- Video Tutorials.
- Demonstration Projects.
- Quick Tips and Examples.
- Complete Advanced Documentation.



Integrated Serial Terminal

Built-in Serial Terminal grants quick LCM debugging and communication.

Download Images, Configuration Files, Icon and Font Libraries to the LCM directly from UnicView AD.

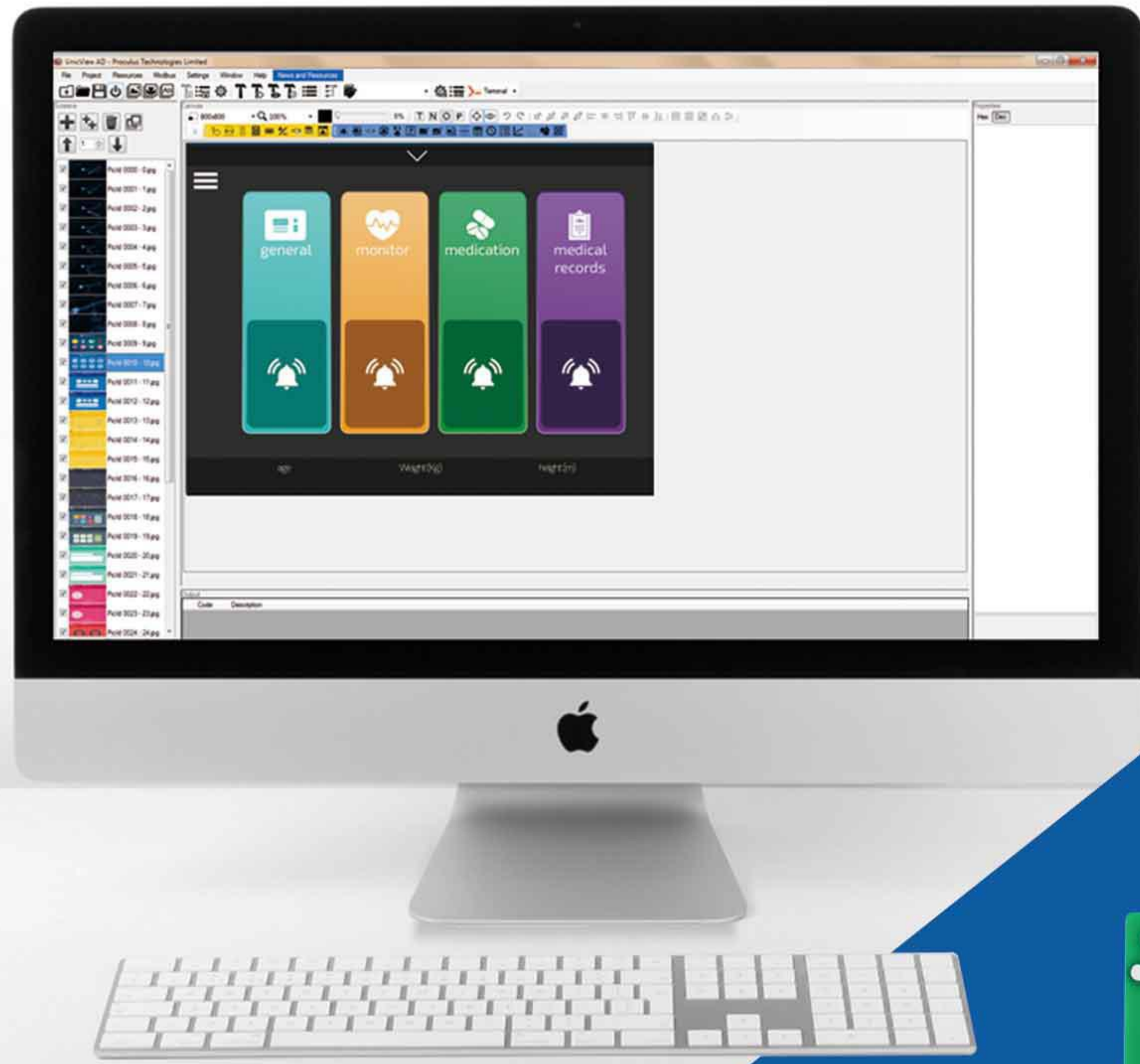
Send commands (e.g.: draw line, draw rectangle, paste icon) simply by selecting the objects on the screen and clicking "Send".



In-Project Design Tools

Each Screen may have a color overlay, making it easy to create a " dim " or "brighter" look on the background images, for example.

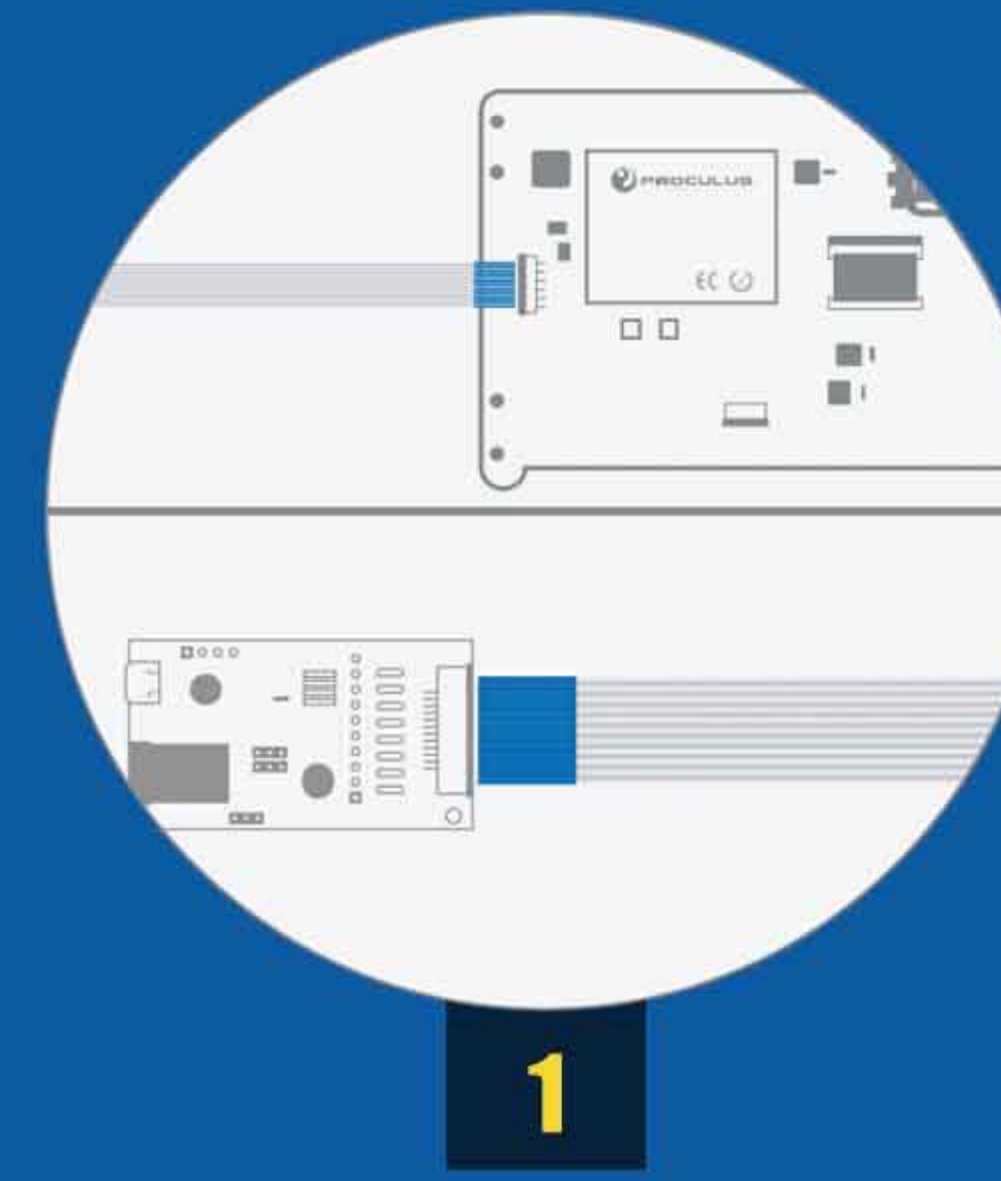
Internet-based image resource repository is planned for upcoming versions. This will provide users with a large image database for creating projects even faster.



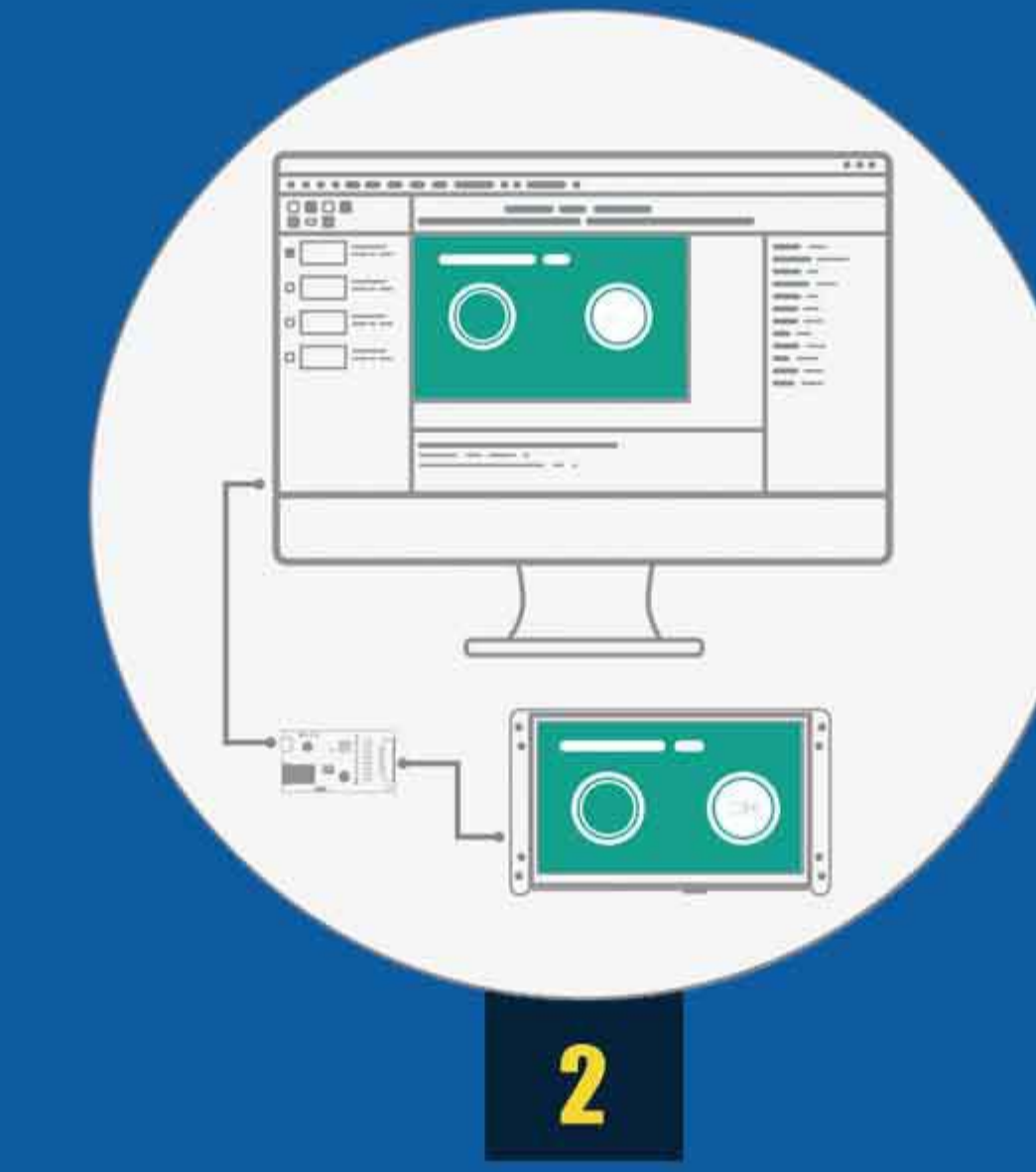
with ~~Think outside the~~ BOX

P.BOX Starter kit

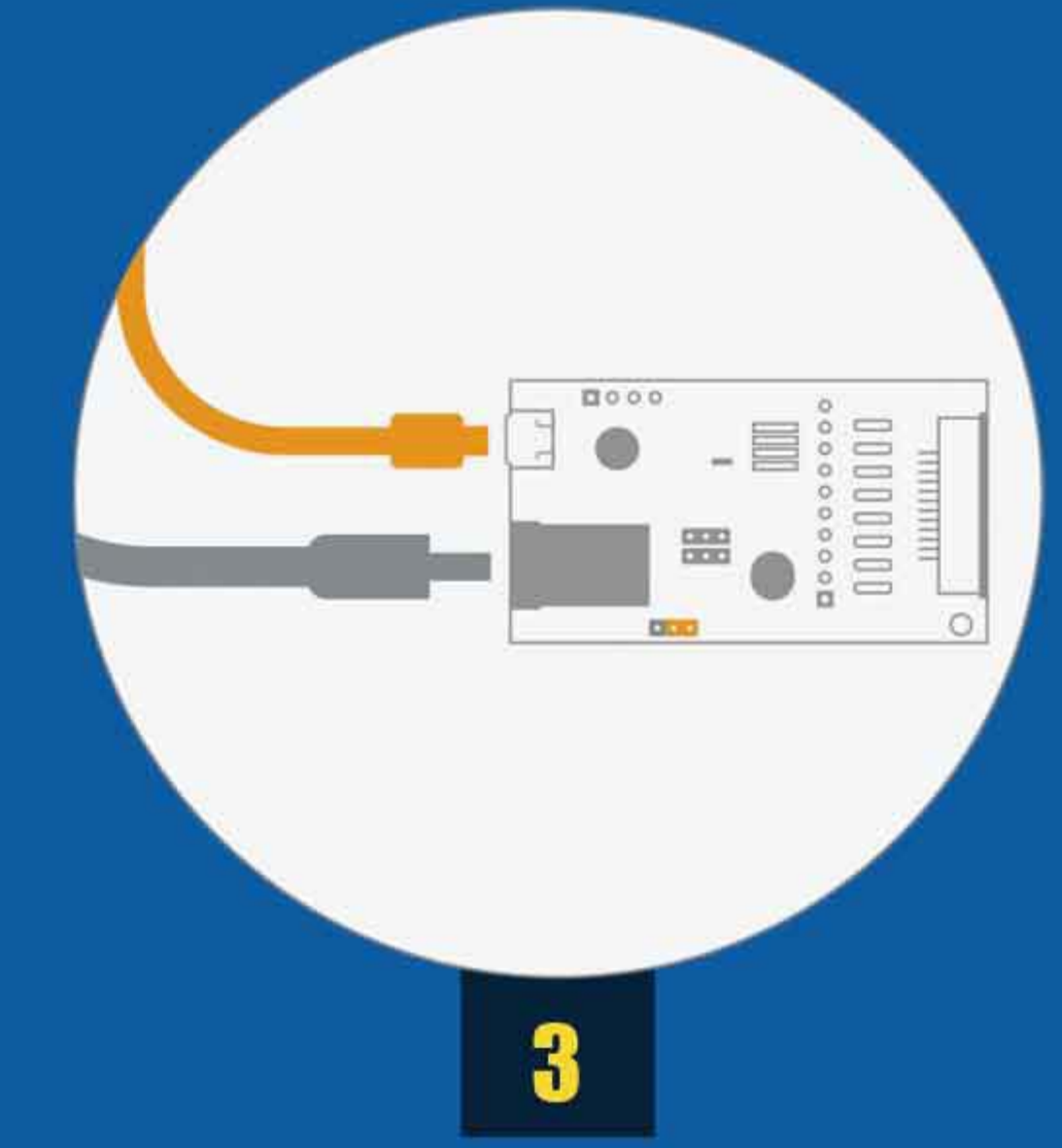
STEP TO USE



1 Connect the display with PAB_02



2 Power on the PAB_02 via USB at 5v connecting computer



3 Create amazing interfaces

Use your Serial Key for UnicView AD® to have a special GUIs design



Automatic Firmware Database Download

UnicView AD automatically downloads the latest Firmware information upon start-up.

Interface Objects that are not supported by the current selected Firmware are disabled.



One-Click PC LCM Project Download

Projects can be downloaded to the LCM via USB or SD Card. Its as easy as clicking "Download".

Users may choose which files (Images, Configurations, Libraries, etc.) to send to the LCM.



Clean Compilation Reports

All files in the project are neatly arranged in a project-based folder structure.

Any errors or warnings are readily available to the user.

Interface Objects present on the project that are not supported by the current selected Firmware are notified as warnings.

Basic

Display 2.8"-P32240J28C_T01
Adaptor USB/Serial -PAB_02
15cm FFC Cable

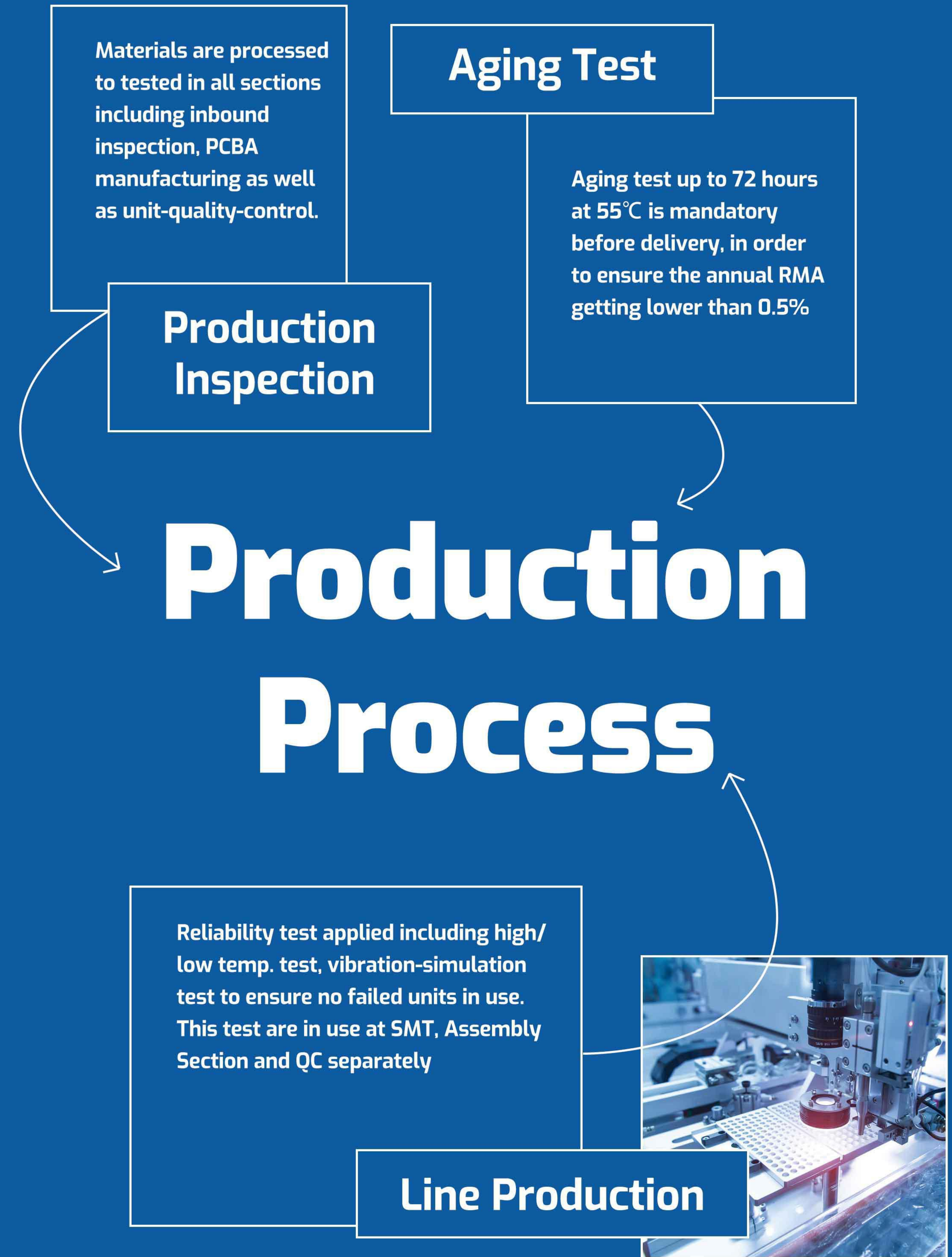
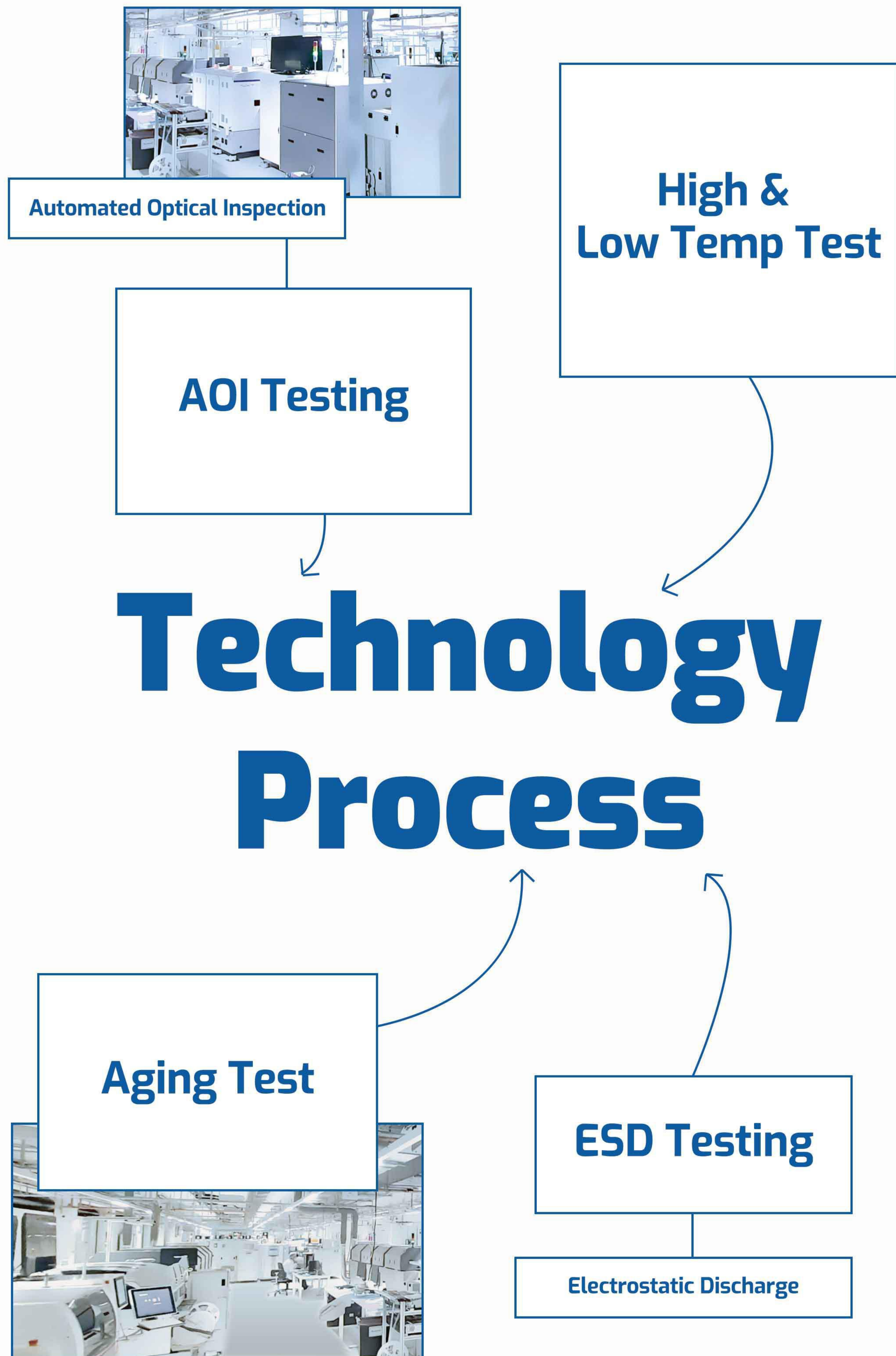
Standard

Display 2.8"-P32240J28C_T01
Adaptor USB/Serial -PAB_02
15cm FFC Cable
Micro USB Cable
MicroSD Card Reader
Adaptor USB/MicroSD

Premium

Display 2.8"-P32240J28C_T01
Adaptor USB/Serial -PAB_02
15cm FFC Cable
Micro USB Cable
MicroSD Card Reader
Adaptor USB/MicroSD
Universal Connector- PAB_01
Shield Arduino- PAB_03
Support for Display

For further information, please visit:
<http://www.proclustech.com/>



Application

Industrial

Smart Home



Medical devices



Application

Coffee Machine



Gas Station



Industrial

Part Number	Size	Scale	Resolution	Brightness	"Voltage (V)"	Interface	Connector	Working Temperature	Download Method	Part Number Rules - P80480V70C_T02BZ1
P32240J28C_T01	2.8"	4:3	320x240	250	5V	TTL/RS-232	10Pin 1.0mm	-20~+70	SD/TF	
P32240J35C_T01	3.5"	4:3	320x240	250	5V	TTL/RS-232	8Pin 2.0mm	-20~+70	SD/TF	
P48272J43C_T01	4.3"	16:9	480x272	300	5V	TTL/RS-232	8Pin 2.0mm/10Pin 1.0mm	-20~+70	SD/TF	P Proculus LCM
P80480J50C_T01	5.0"	16:9	800x480	300	5V	TTL/RS-232	8Pin 2.0mm/10Pin 1.0mm	-20~+70	SD/TF	80 H. Resolution: 32=320; 48=480; 64=640; 80=800; 10=1024; 12=1280; 13=1365; 14=1398; 19=1920
P80480V50C_T17	5.0"	16:9	800x480	400	5V	TTL/RS-232	10Pin 1.0mm	-20~+70	USB Drive	480 V. Resolution: 240=240; 272=272; 480=480; 600=600; 768=768; 800=800; 105=1050; 108=1080
P64480V56C_T07	5.6"	4:3	640x480	280	5V	TTL/RS-232	8Pin 2.0mm/10Pin 1.0mm	-20~+70	USB Drive	V Reserved
P80480V70C_T07	7.0"	16:9	800x480	400	5V	TTL/RS-232	8Pin 2.0mm/10Pin 1.0mm	-20~+70	USB Drive	70 Display Size: 70 is 7.0" in diagonal distance
P80480V70C_T30	7.0"	16:9	800x480	400	5V	TTL/RS-232	8Pin 2.0mm	-20~+70	USB Drive	C_ Category: C=Consuming / I=Industrial / P=Industrial Plus
P80480J70C_T01	7.0"	16:9	800x480	300	5-15V	TTL/RS-232	8Pin 2.0mm/10Pin 1.0mm	-20~+70	SD/TF	T Touch Panel: N=No Touch / T=Resistive Touch / T+=Tempered Glass / P= Pcap Touch
P80600V80C_T07	8.0"	4:3	800x600	450	5V	TTL	8Pin 2.0mm	-20~+70	USB Drive	02 Hardware and Software version
P80600V80C_T30	8.0"	4:3	800x600	300	6-35V/5V	TTL/RS-232	8Pin 2.0mm	-20~+70	USB Drive	B B=Bezel installed
P10600V101C_T30	10.1"	4:3	1024x600	300	6-35V/5V	TTL/RS-232	8Pin 2.0mm	-20~+70	USB Drive	Z1 Z1= Special firmware/hardware before delivery
P80600J104C_T01	10.4"	4:3	800x600	300	5-15V	TTL/RS-232	8Pin 2.0mm/10Pin 1.0mm	-20~+70	SD/TF	

Industrial

Part Number	Size	Scale	Resolution	Brightness	"Voltage (V)"	Interface	Connector	Working Temperature	Download Method	Part Number Rules - P80480V70C_T02BZ1
P48272V43I_T39	4.3"	16:9	480x272	1,000	6-35V/5V	RS-232	8Pin 2.0mm	-20~+70	USB Drive	High defination
P80480V70I_T39	7.0"	16:9	800x480	1,000	6-35V/5V	RS-232	8Pin 2.0mm	-20~+70	USB Drive	Supports 128 segments voices playing, 1.204 Secs/Segment
P80600J80I_T01	8.0"	4:3	800x600	400	6-40V	RS-232	8Pin 2.0mm	-20~+70	SD/TF	Readable in sunshine
P10768V97I_T30	9.7"	4:3	1024x768	300	6-35V/5V	RS-232	8Pin 2.0mm	-20~+70	USB Drive	High brightness
P10600V101I_T30	10.1"	16:9	1024x600	500	6-35V/5V	RS-232	8Pin 2.0mm	-20~+70	USB Drive	Wide working temp. range
P80600V104I_T30	10.4"	4:3	800x600	350	6-35V/5V	RS-232	8Pin 2.0mm	-20~+70	USB Drive	Capacitive Touch Screen/P-cap
P10768J15I_T01	15.0"	4:3	1024x768	300	10.8-12.6V	RS232+RS485	8Pin 2.0mm	-20~+70	SD/TF	Wide viewing angle